

**Product Parameters:**

- \* Product Name: COB Led Reflector
- \* Part Number : KB-D5030-15RF-K  
KB-D5030-24RF-K  
KB-D5030-36RF-K  
KB-D5030-60RF-K

- \* Product Size :  $\Phi 50*\Phi 15*H30.7\text{mm}$
- \* Beam Angle : 15 degree(half angle)  
24 degree(half angle)  
36 degree(half angle)  
60 degree(half angle)



- \* Product Inlude : Reflector+Holder+Cover
- \* Material : PC with coating
- \* Tolerance:  $\pm 0.1\text{mm}$
- \* Operating Temperature :  $-40 \sim 110^{\circ}\text{C}$
  
- \* Lens Light Efficiency : 86~88%
- \* Assembly : Frame
- \* Match Led : Cree -CXA13xx/15xx  
Citizen-CLL020 / Bridgelux-V8/V10  
1215 /Luminus-CXM-6/7/9

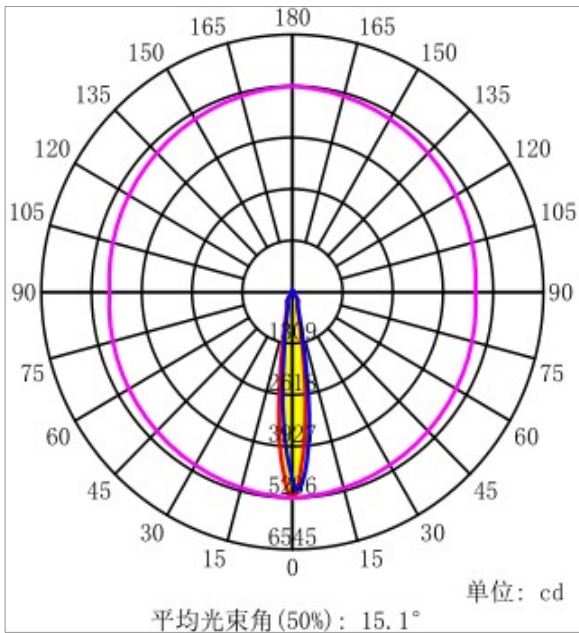
- \* Direction for use
  - 1, Please use some soft paper or pure water to clean lens ( reflector)
  - 2, Don't use any industrial solvent to clean lens surface , such as alcohol
  - 3, Storage environment : Temperature  $0\sim 40^{\circ}\text{C}$  , Humidity 30%~95%
  - 4, This kind of lens can make the lighting more concentrated, and it's made from transparent material , so please do not open the packages until you use them, in case of the dust and other pollutions.

**Product Package:**

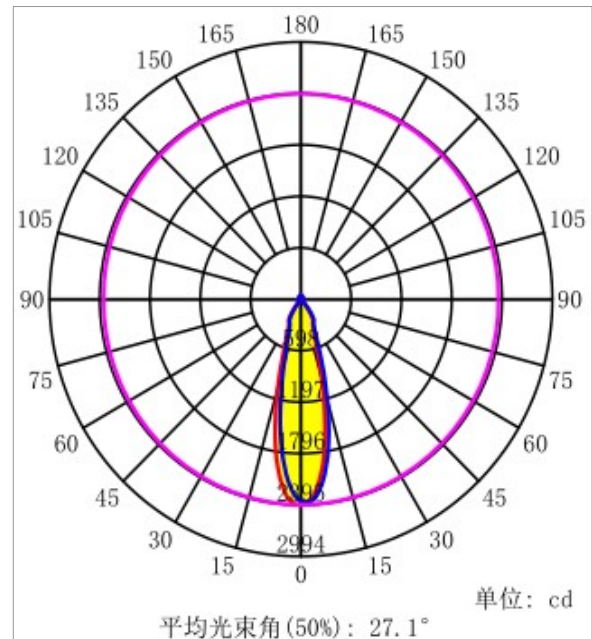


**Optical Characteristics:**

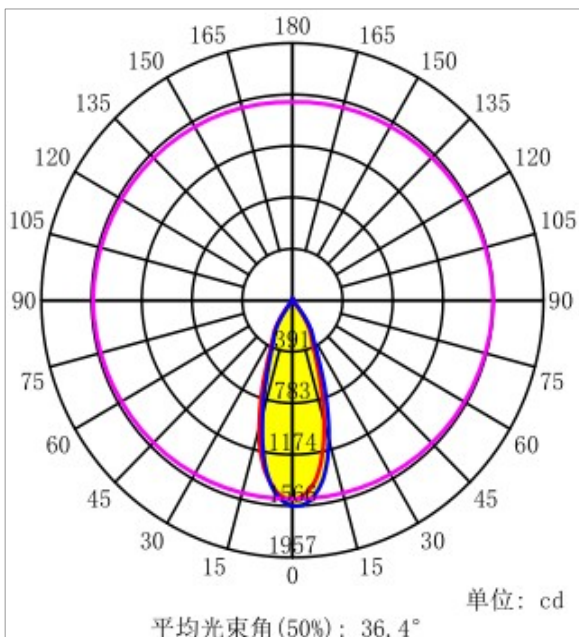
Part Number:KB-D5030-15F-K



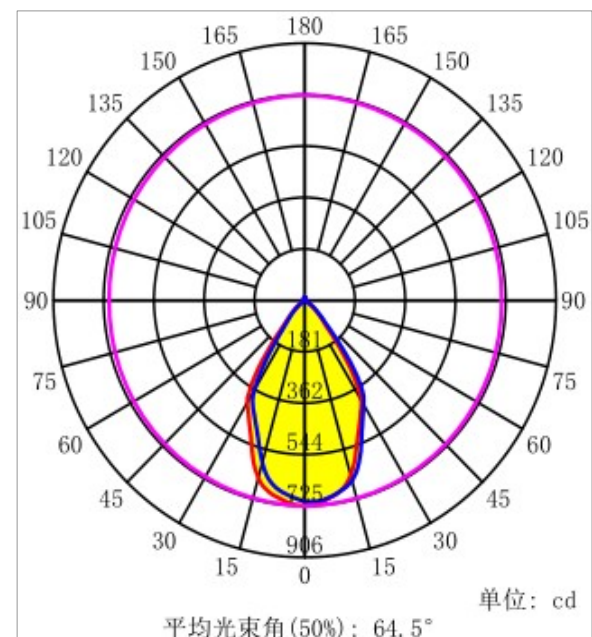
Part Number:KB-D5030-24RF-K



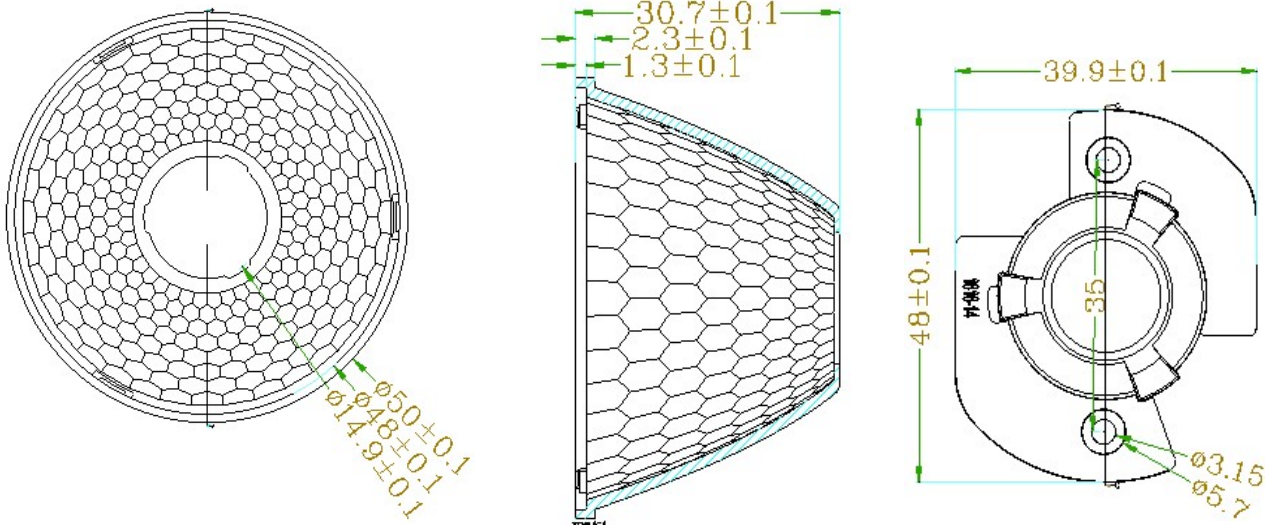
Part Number:KB-D5030-36RF-K



Part Number:KB-D5030-60RF-K

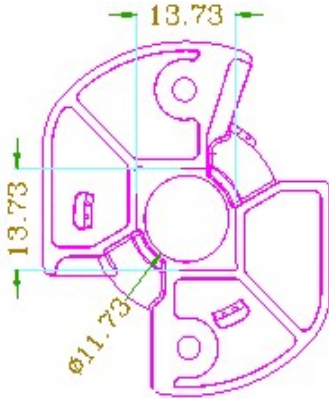


**Mechanical Characteristics:**

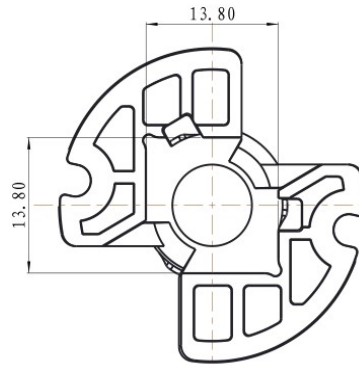


**Matched COB Holder**

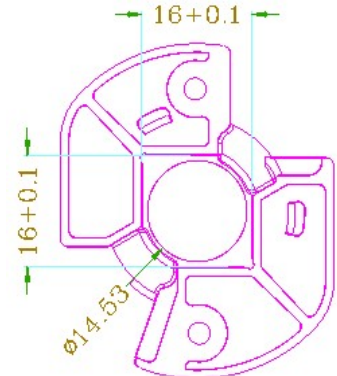
Citizen-CLL020/022



CREE-CXA1304



CREE-CXA1507/1515



Solderless holder

