


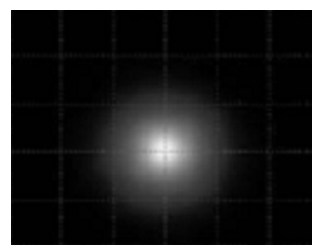


Product Parameters:

- * Product Name: Led Lens
- * Part Number : KB-H22-10-XP
- * Product Size : Φ 19.4 * H 15.2mm
 Φ 22 * H 15.8mm
- * Beam Angle : 10 degree(half angle)
- * Material : Lens-PMMA
Holder-PC
- * Holder Color : White & Black
- * Tolerance: \pm 0.1mm
- * Operating Temperature : -40 ~ 120°C
- * Lens Light Efficiency : 86~88%
- * Assembly : Glue
- * Match Led : Cree Xlamp XPC | XPE|XPG 
Seoul Z5 
Samsung Ceramic 3535 



- * Direction for use
 - 1, Please use some soft paper or pure water to clean lens (reflector)
 - 2, Don't use any industrial solvent to clean lens surface , such as alcohol
 - 3, Storage environment : Temperature 0~40°C , Humidity 30%~95%
 - 4, This kind of lens can make the lighting more concentrated, and it's made from transparent material , so please do not open the packages until you use them, in case of the dust and other pollutions.

Product Package:



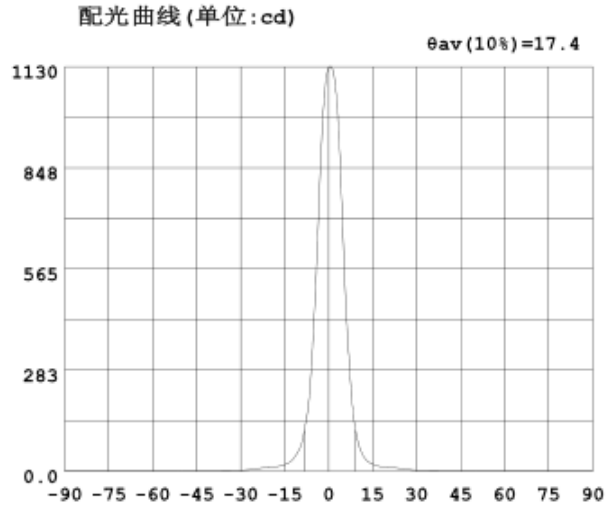
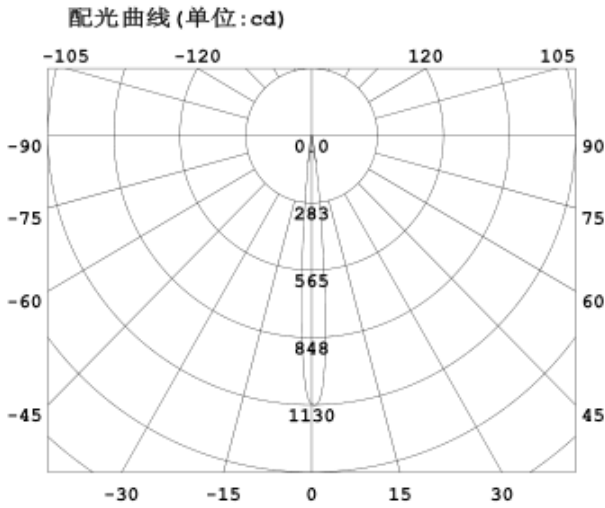
Single lens

250pcs/box
20boxes/carton
G.W/Ctn: 17KG
Ctn Size: 62.5*29*26cm

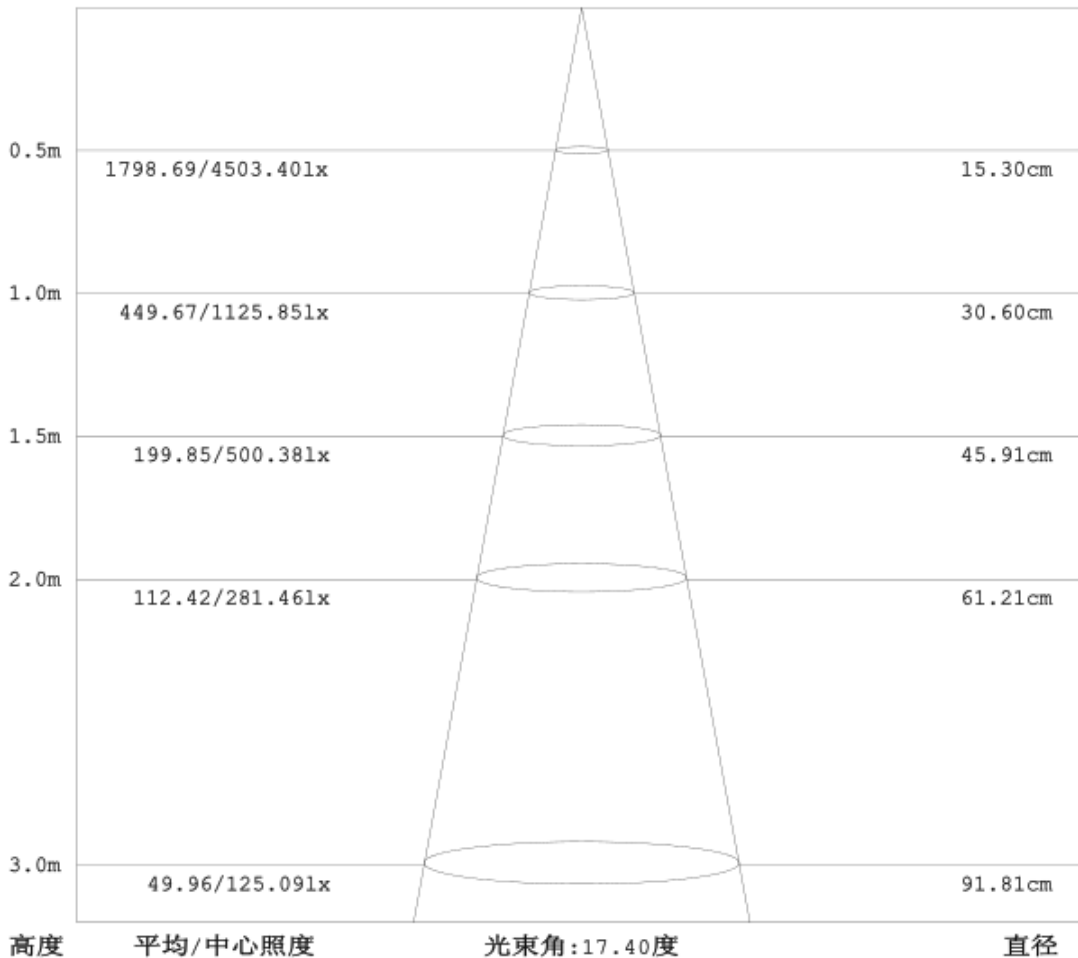
Lens with holder

175set/box
20boxes/carton
G.W/Ctn: 19KG
Ctn Size: 62.5*29*26cm

Optical Characteristics:



Max intensity of light diffusion angle $\theta(25\%)$: 13.1° $\theta(50\%)$: 9.5° $\theta(75\%)$: 6.7° $\theta(10\%)$: 17.4°
 Central intensity of light diffusion angle $\theta(25\%)$: 13.1° $\theta(50\%)$: 9.5° $\theta(75\%)$: 6.7° $\theta(10\%)$: 17.4°



Mechanical Characteristics:

