



Product Parameters (产品描述)

产品编号 | Part Number: KB-H37-xx-R-HW/HB-TAPE
出光角度 | Beam Angle: 4/8/15/25/40/60/Oval
产品材料 | Material: PMMA
工作温度 | Work Temp: <85℃

安装方式 | Fastening: Glue|Pins|Tape
支架颜色 | Holder Color: White/Black
透光率 | Transmittance: 93%
匹配LED | Match Led: Dome 3535|5050 Led

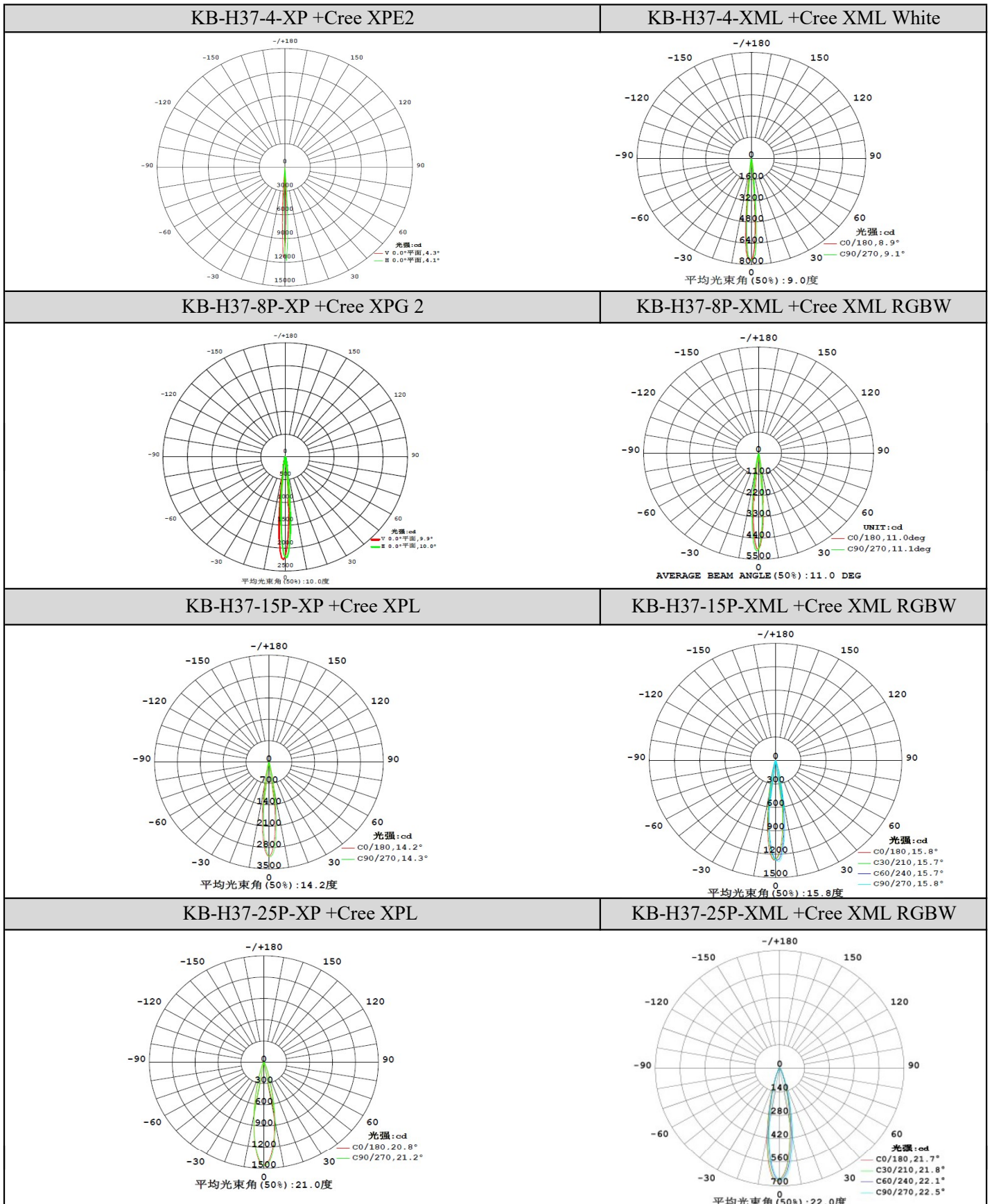
Part Number	Match Led	Dimension	Beam Angle
KB-H37-4-R-HW/HB-TAPE	Dome 3535 5050 White	Φ37*H18.75mm	~4°
KB-H37-8P-R-HW/HB-TAPE	Dome 3535 5050 White&RGBW	Φ37*H18.75mm	~8°
KB-H37-15P-R-HW/HB-TAPE	Dome 3535 5050 White&RGBW	Φ37*H18.75mm	~15°
KB-H37-25P-R-HW/HB-TAPE	Dome 3535 5050 White&RGBW	Φ37*H18.75mm	~25°
KB-H37-40P-R-HW/HB-TAPE	Dome 3535 5050 White&RGBW	Φ37*H18.75mm	~40°
KB-H37-60P-R-HW/HB-TAPE	Dome 3535 5050 White&RGBW	Φ37*H18.75mm	~60°
KB-H37-1030-R-HW/HB-TAPE	Dome 3535 5050 White&RGBW	Φ37*H18.75mm	~10*30°

Direction for Use

(透镜 | LENS)

- 1, Please use some soft paper or pure water to clean lens (reflector)
- 2, Don't use any industrial solvent to clean lens surface , such as alcohol
- 3, Storage environment : Temperature 0~40℃ , Humidity 30%~95%
- 4, This kind of lens can make the lighting more concentrated, and it's made from transparent material , so please do not open the packages until you use them, in case of the dust and other pollutions.

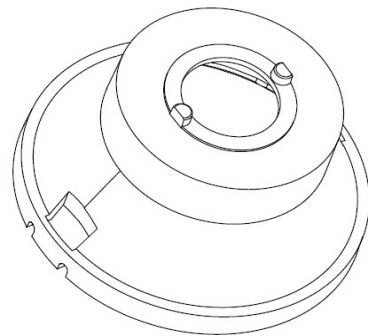
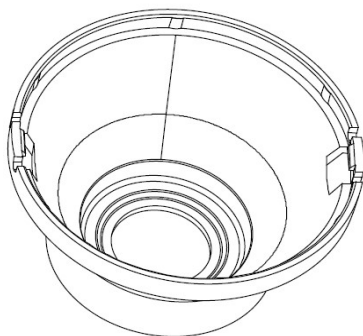
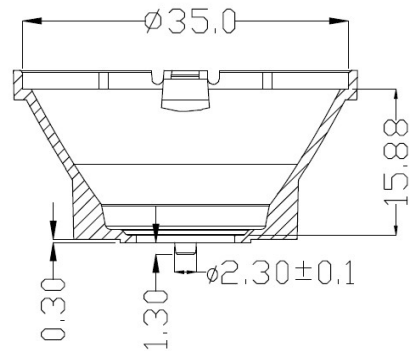
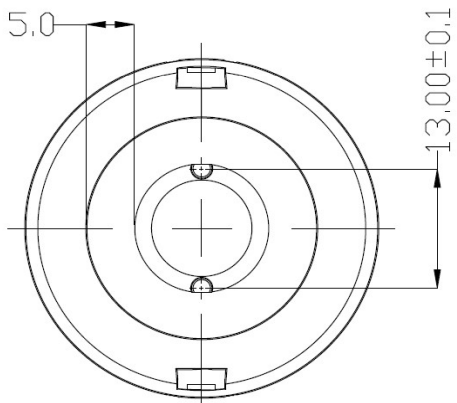
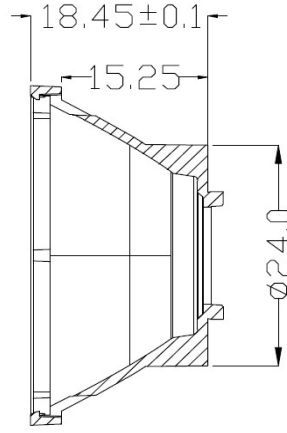
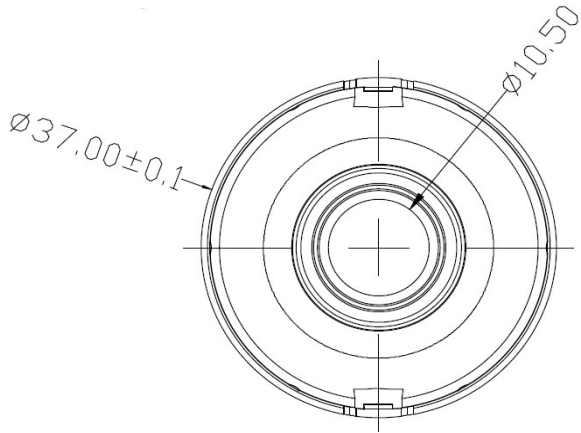
Light Distribution Curve (配光曲线图):



Light Distribution Curve (配光曲线图):

KB-H37-40P-XP	KB-H37-40P-XML +Cree XML RGBW
	<p>光强: cd C0/180, 41.4° C90/270, 41.1° C45/225, 41.1° C135/315, 41.8° 平均光束角 (50%): 41.4度</p>
KB-H37-60P-XP	KB-H37-60P-XML +Cree XML RGBW
	<p>光强: cd V 0.0°平面, 56.4° H 0.0°平面, 56.3° 平均光束角 (50%): 56.4度</p>
KB-H37-1030-XP +Cree XTE	KB-H37-1030-XML +Cree XML RGBW
<p>UNIT: cd V 0.0°平面, 30.7deg H 0.0°平面, 12.3deg AVERAGE BEAM ANGLE (50%): 21.5 DEG</p>	<p>光强: cd C0/180, 13.1° C90/270, 27.5° 平均光束角 (50%): 20.3度</p>

Mechanical Characteristics (产品尺寸):



Adhesive tape used in optics and assemblies

KingBrite supplied with double-sided high performance acrylic based adhesive tape. This tape is specifically selected for this application. There is an acrylic pressure-sensitive adhesive coating on both sides. This tape have been manufactured for over twenty years during which time no justified complaints of permature ageing have been received.

Generally this tape works well with the LEDs on the market, but each customer must take necessary measures to ensure complete compatibility with his particular product and its components. Testing and verifying of the adhesive and their combinations is always on the customer's responsibility. For extreme conditions(heavy or prolonged exposure to high ultraviolet radiation, moisture, temperature changes, constant or sudden vibrations etc.) KingBrite recommends to use glue or screws to ensure reliable operation.

Technical information

- * Thickness: 0.4mm
- * Installation pressure: 10N/cm²
- * Assembly temperature range: +18°C~+40°C
- * Curing time for end strength: 24hours
- * Work temperature: -40°C~+120°C
- * Excellent Uvresistance, suitable for both indoor&outdoor lighting
- * Shelf life: 2 years from purchase

90° Peel Adhesion	N/100mm (lb/in)	260(15)		ASTM D3330
Dynamic Shear Strength	kPa (lb/in ²)	690(100)		ASTM D-1002
Normal Tensile	kPa (lb/in ²)	1100(160)		ASTM D-897
Static Shear Strength	Grams Weight that ½ square inch will hold 10,000 minutes(7days)	22°C (72°F) 66°C (150°F) 93°C (200°F)	1500 500 500	ASTM 3654

- 1, Ensure the assembled pcb is straight, so the tape can be fully sticked to the surface.
- 2, Ensure the assembled pcb is clean and dry, any dirt or unknown chemicals may affect the tape viscous force.
- 3, Stress lens 1~5 seconds after assembly to ensure 100% bond.
- 4, Check lens one by one after assembly to ensure all lens are sticked properly, if lens was not sticked to led perfectly, lens will be a bit suspended, picked it off to stick again or replace with a new tape.

Disclaimer

KingBrite cannot take responsibility for the results obtained by others whose methods we can not control. It is always the customer's responsibility to determine the adhesive's suitability for their products and to take precautions for pertection of property and persons against any hazards that may involved in the handling and use of adhesives. KingBrite disclaims all warranties, including warranties of merchantability or suitability for a particular purpose, arising from use of any adhesive product. KingBrite disclaims any liability for consequential or incidental damages of any kind, including lost profits.