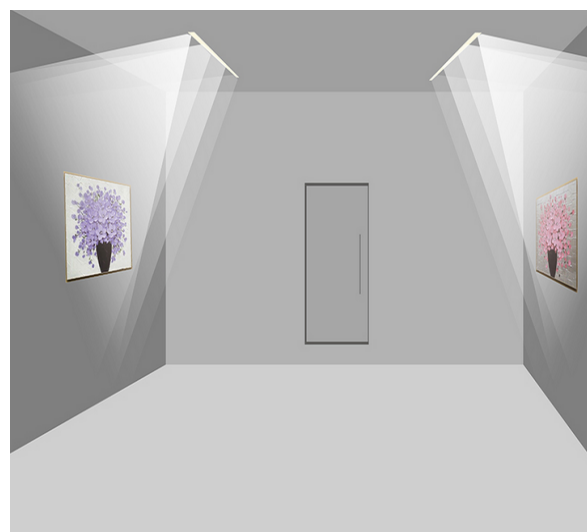
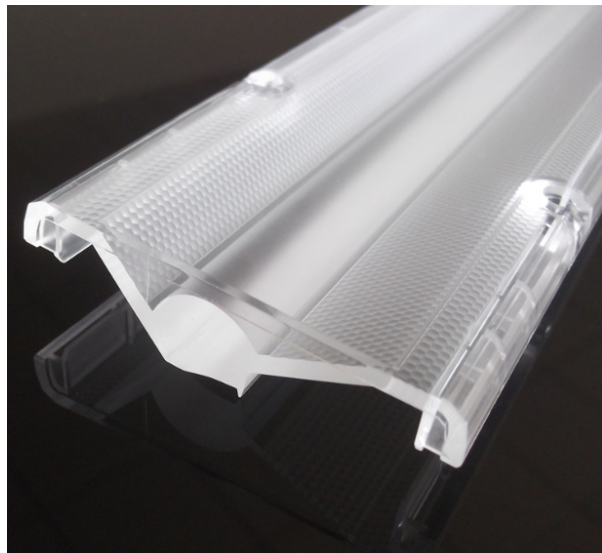


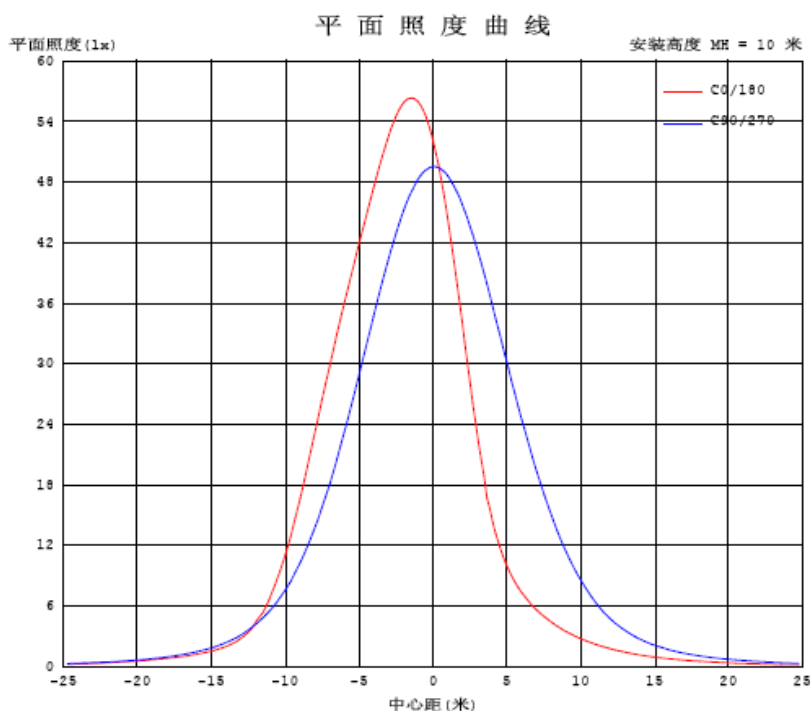
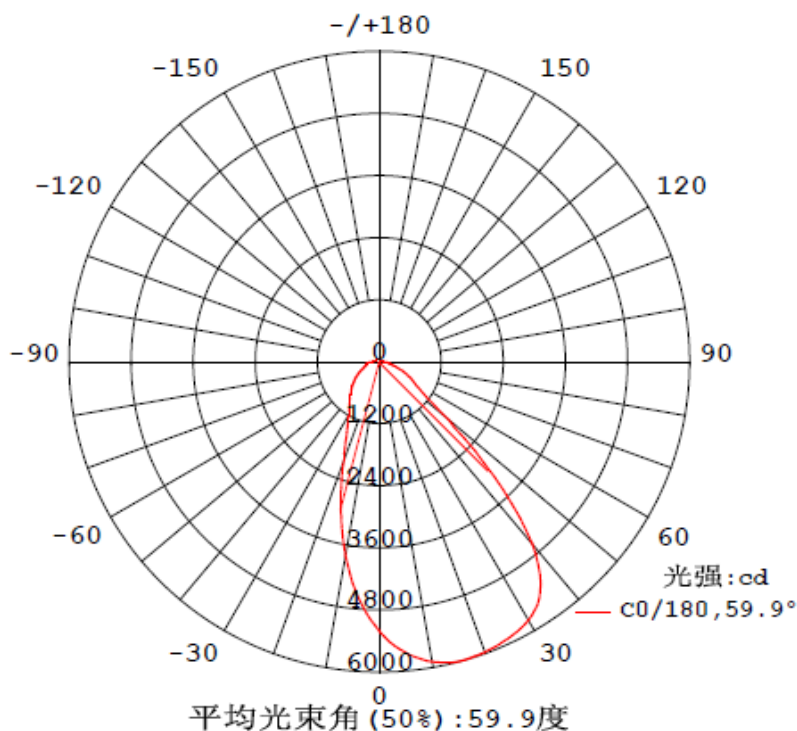
Product Parameters:

- * Product Name: Led Linear Lens
- * Part Number : KB-LN282-AS
- * Product Size : L281.6*W67.8mm
- * Beam Angle : Asymmetrical degree
- * Material Optical Grade PMMA
- * Tolerance: $\pm 0.2\text{mm}$
- * Operating Temperature : $-40 \sim 90^{\circ}\text{C}$
- * Lens Light Efficiency : 90~92%
- * Assembly : Screw
- * Match Led : SMD5630/3014/2835/3030



- * Direction for use
 - 1, Please use some soft paper or pure water to clean lens (reflector)
 - 2, Don't use any industrial solvent to clean lens surface , such as alcohol
 - 3, Storage environment : Temperature $0\sim 40^{\circ}\text{C}$, Humidity 30%~95%
 - 4, This kind of lens can make the lighting more concentrated, and it's made from transparent material , so please do not open the packages until you use them, in case of the dust and other pollutions.
- * **NOTE: The typical divergence will be changed by different color, chip size and chip position tolerance. The typical total divergence is the full angle measured where the luminous intensity is half of peak value.**

Optical Characteristics:



Mechanical Characteristics:

