

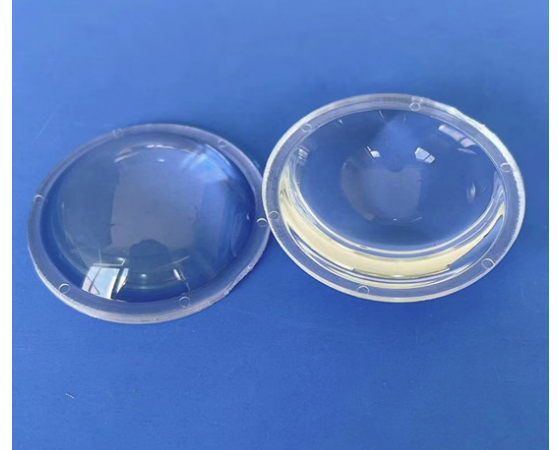
Product Parameters:

- * Product Name: Led Lens
- * Part Number : KB-H38-DT
- * Product Size : Φ 38 * H 10mm

- * Beam Angle : \sim 10~60°
- * Material : PMMA
- * Holder Color : N/A

- * Tolerance: \pm 0.15mm
- * Work Temperature : -40 ~ 90°C
- * Efficiency : >90%

- * Assembly : Frame
- * Match Led : 3030|3535|5050 Leds



* Direction for use

- 1, Please use some soft paper or pure water to clean lens (reflector)
- 2, Don't use any industrial solvent to clean lens surface , such as alcohol
- 3, Storage environment : Temperature 0~40°C , Humidity 30%~95%
- 4, This kind of lens can make the lighting more concentrated, and it's made from transparent material , so please do not open the packages until you use them, in case of the dust and other pollutions.

Product Package:



Mechanical Characteristics:

