



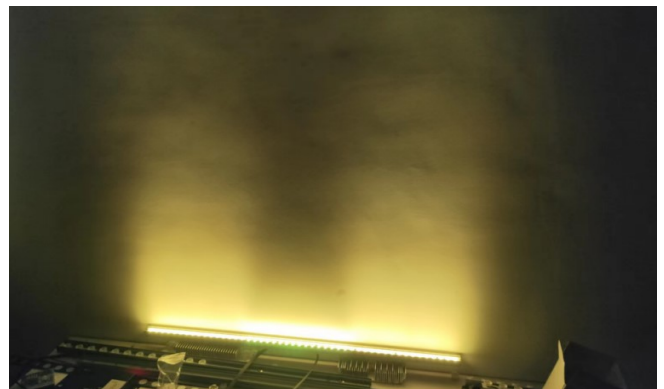
**Product Parameters (产品描述)**

产品编号 | Part No.: KB-H11-xxF-2835  
出光角度 | Angle: 30/60/Oval  
产品材料 | Material: PC  
工作温度 | Work Temp: <105°C

安装方式 | Fastening: Pins+Glue  
支架颜色 | Holder Color: N/A  
透光率 | Transmittance: 93%  
匹配LED | Match Led: SMD2835|3030 Led

Part Number	Lens Surface	Dimension	Pins Pitch	Beam Angle
KB-H11-30PF-2835	珠面/beads	L11*W13.9*H7.3mm	12.5mm	~30°
KB-H11-60PF-2835	珠面/beads	L11*W13.9*H7.3mm	12.5mm	~60°
KB-H11-3045F-2835	条纹面/strip	L11*W13.9*H7.3mm	12.5mm	~30*45°

*Lenses on both sides VS no lens in the middle*

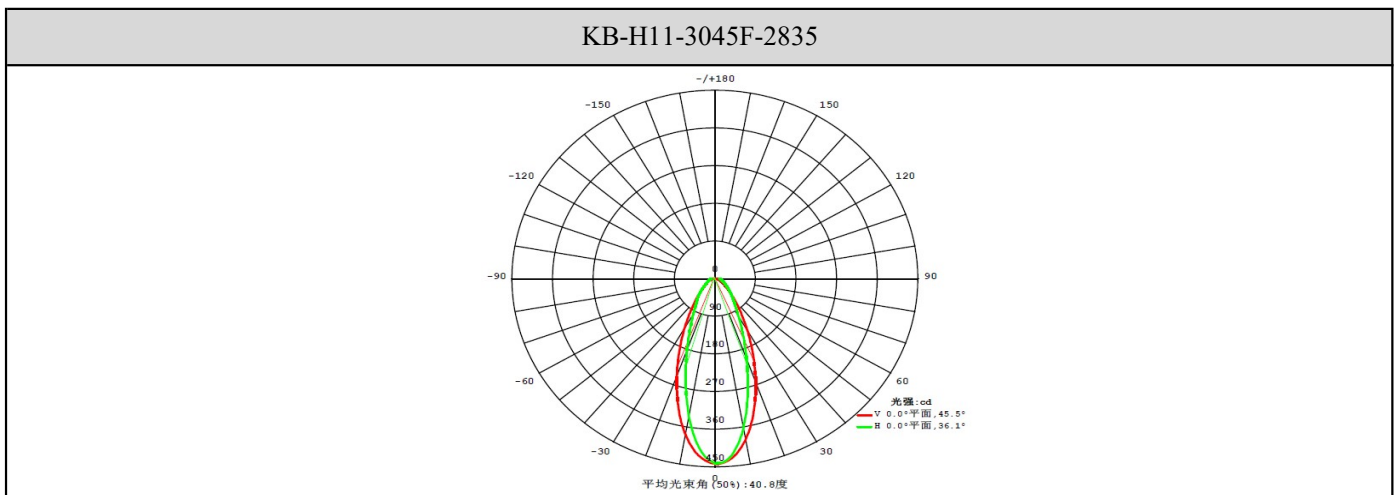
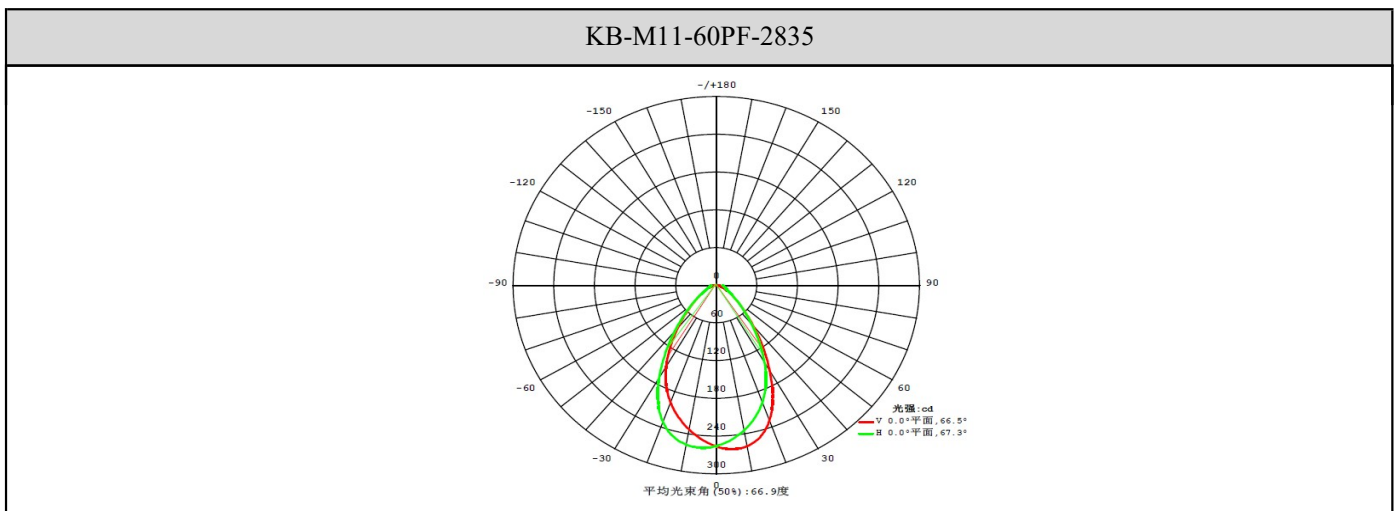
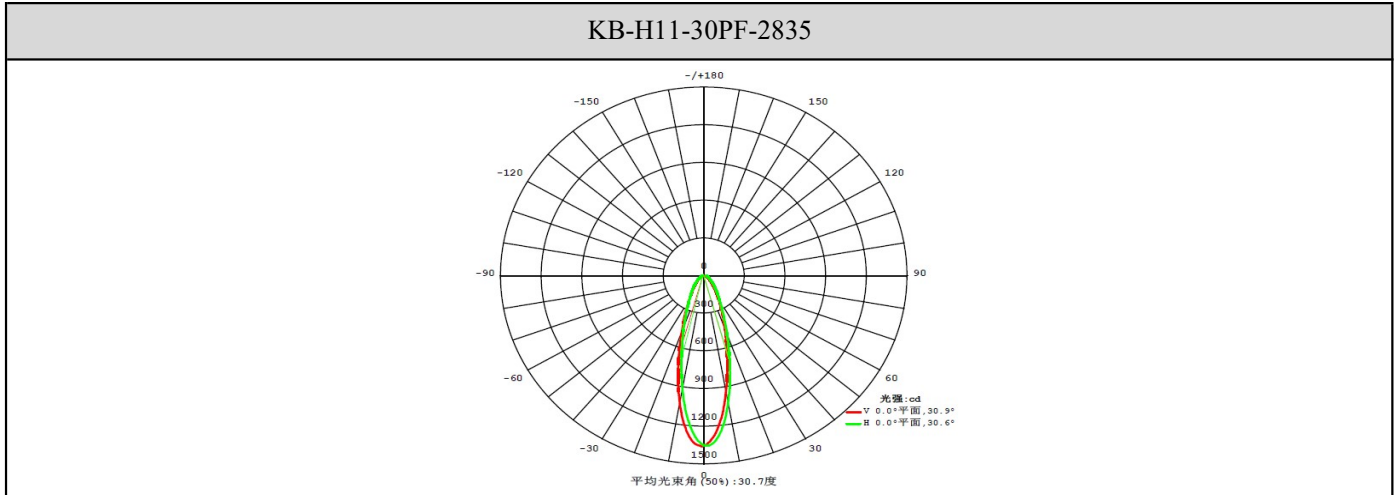


**Direction for Use**

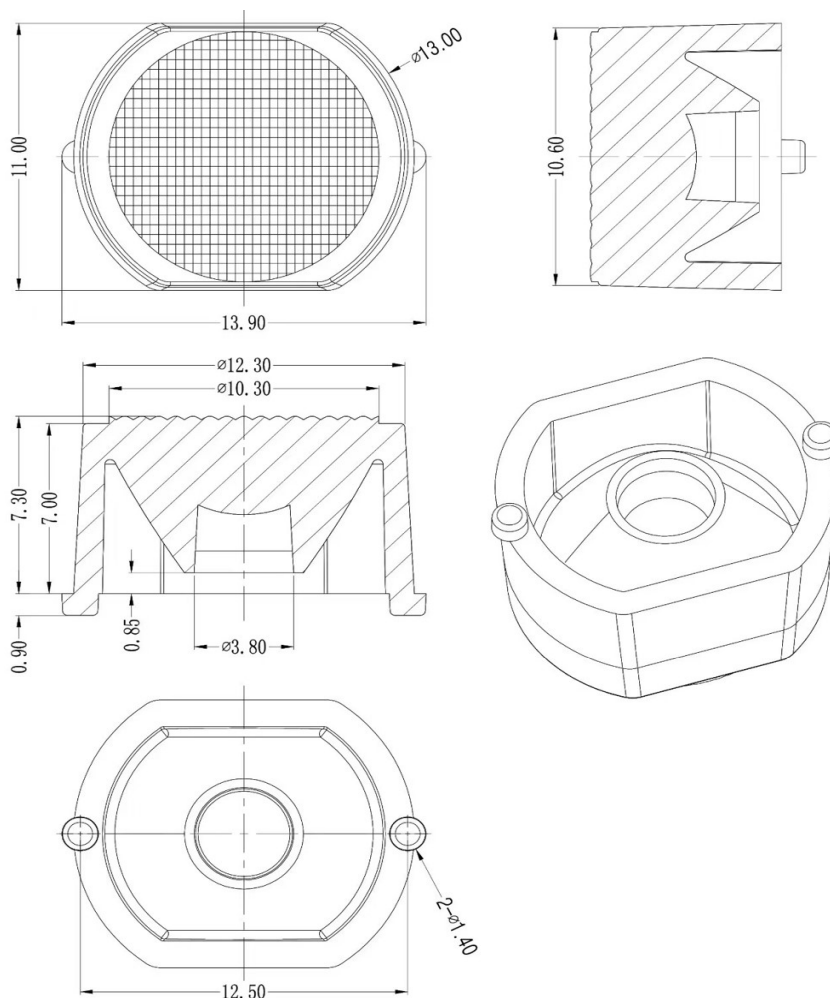
**(透镜 | LENS)**

- 1, Please use some soft paper or pure water to clean lens ( reflector)
- 2, Don't use any industrial solvent to clean lens surface , such as alcohol
- 3, Storage environment : Temperature 0~40°C , Humidity 30%~95%
- 4, This kind of lens can make the lighting more concentrated, and it's made from transparent material , so please do not open the packages until you use them, in case of the dust and other pollutions.



Light Distribution Curve (配光曲线图):



**Mechanical Characteristics (产品尺寸):**



**Product Package (产品包装):**

Inner Box (内盒)	Outer Carton (外箱)
	
<p>1000pcs/box Gross weight: 750g/box Box dimension: 12.2*12.3*13.4cm</p>	<p>20boxes/carton 20,000pcs/carton Gross weight: 16kg/CTN Carton Dimension: 64*28*32cm</p>