

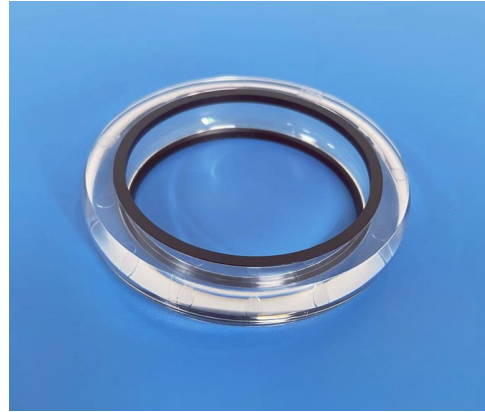
Product Parameters:

- * Product Name: Led Lens
- * Part Number : KB-WL68-360
- * Product Size : $\phi 68.49 * H14.05 \text{mm}$

- * Beam Angle : ~ 360 Degree
- * Material : PC
- * Silica Seal : N/A

- * Tolerance: $\pm 0.2 \text{mm}$
- * Work Temperature : $-40 \sim 105^{\circ}\text{C}$
- * Efficiency : $> 88\%$

- * Assembly : Screws
- * Match Led : Dome/Flat 3030|3535|5050 Leds

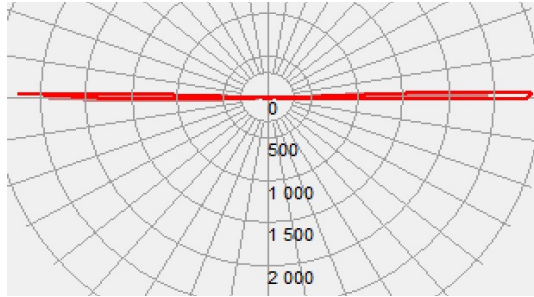


- * Direction for use
 - 1, Please use some soft paper or pure water to clean lens (reflector)
 - 2, Don't use any industrial solvent to clean lens surface , such as alcohol
 - 3, Storage environment : Temperature $0 \sim 40^{\circ}\text{C}$, Humidity 30%~95%
 - 4, This kind of lens can make the lighting more concentrated, and it's made from transparent material , so please do not open the packages until you use them, in case of the dust and other pollutions.

Product Package:



Optical Characteristics:



Mechanical Characteristics:

